


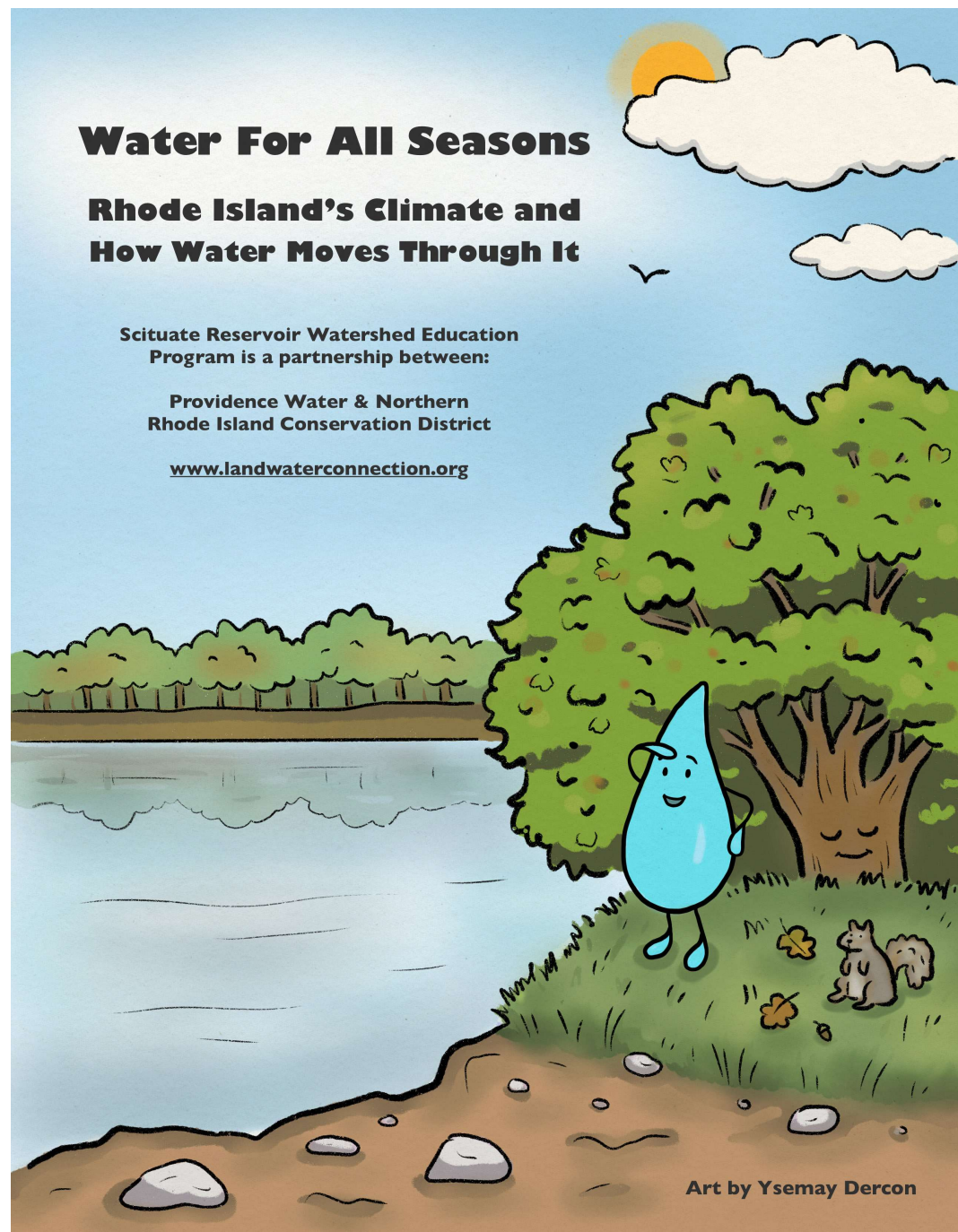
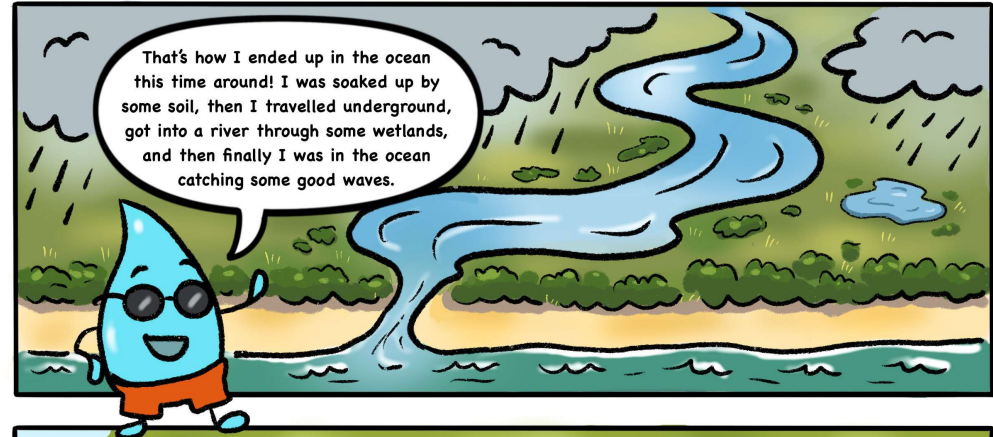
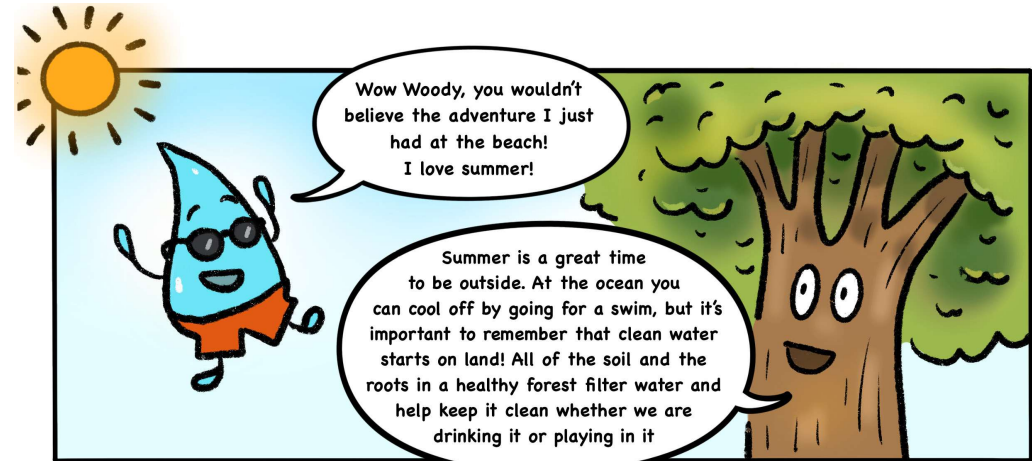
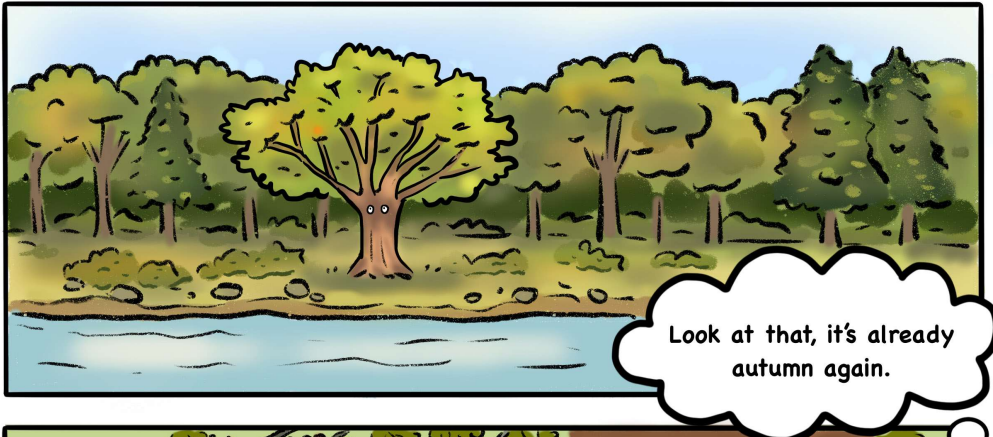
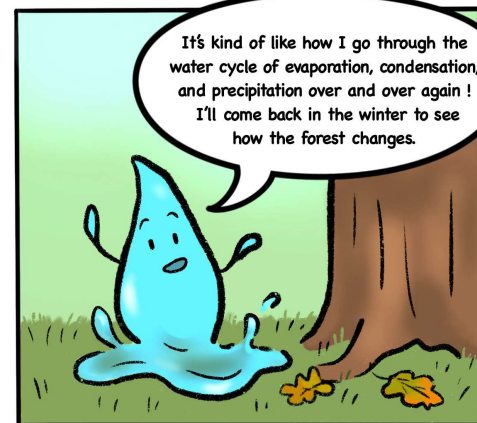
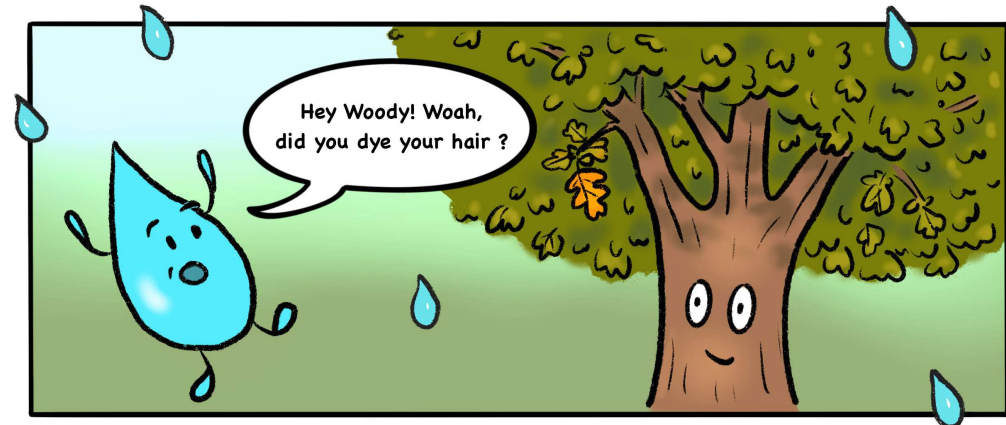
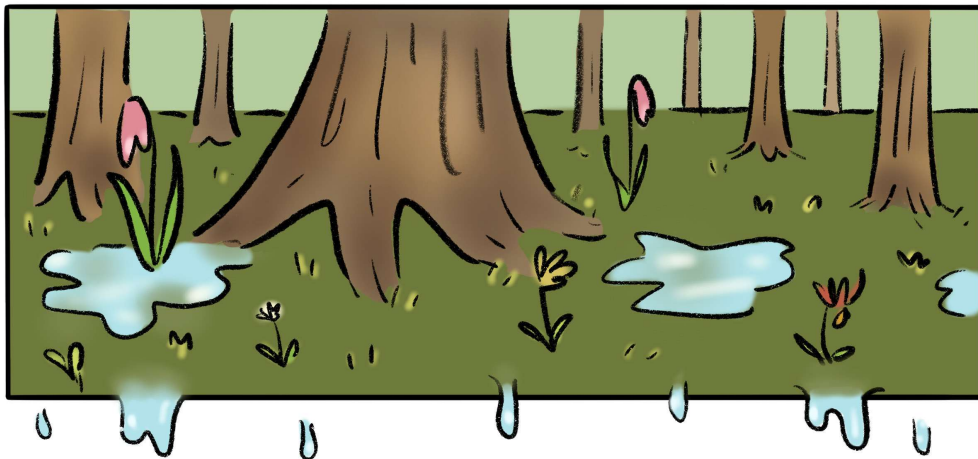
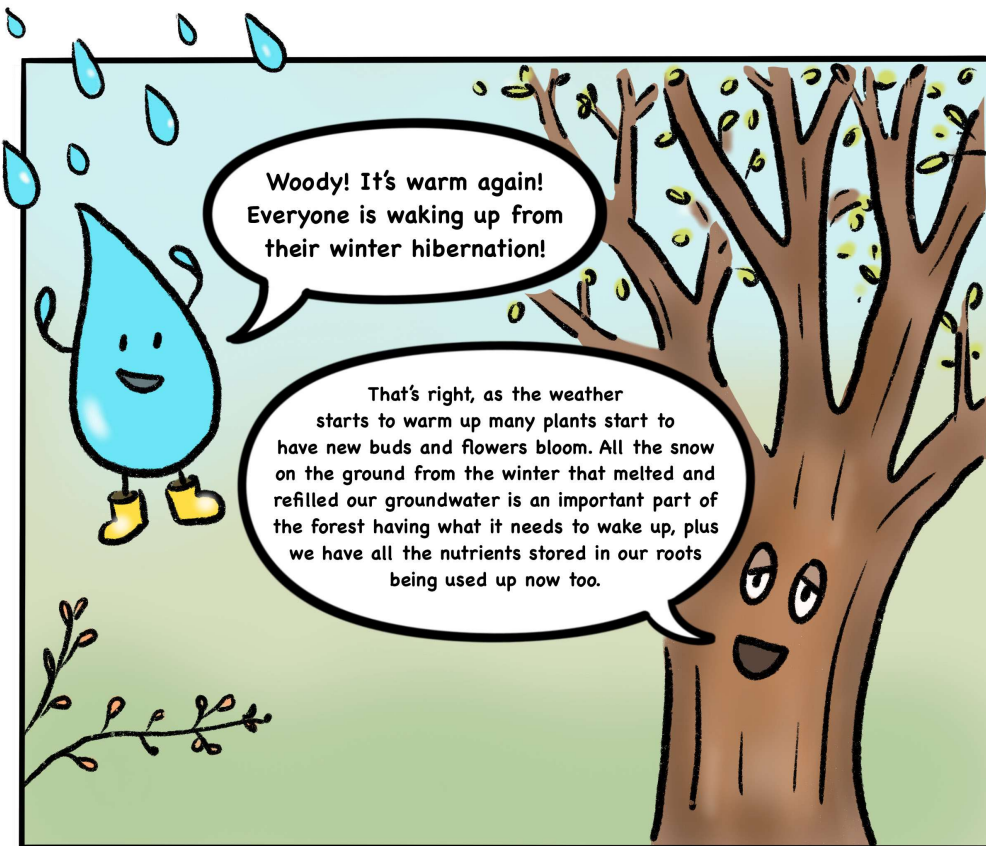
 <b>FALL</b>	 <b>WINTER</b>
 <b>SPRING</b>	 <b>SUMMER</b>











Climate is the weather  
condition of an area over  
a long period of time!  
A temperate climate is  
what we have in Rhode  
Island where the  
temperatures are neither  
extremely hot nor cold  
and there are four  
distinct seasons.

